

BELL

Platform Support





GEARSHAFT

NSN: 3040-01-459-1398
P/N: 1-030-193-05
HONEYWELL (CAGE 99193)



CHAMBER COMBUSTION T53 ENGINE

NSN: 2840-00-943-2375
P/N: 1-130-780-01
HONEYWELL (CAGE 99193)



HOSE ASSEMBLY

NSN: 4720-01-122-3329
P/N: 1-300-377-01
HONEYWELL (CAGE 99193)



ACTUATOR

NSN: 6220-01-037-4088
P/N: 46-0005-1
HONEYWELL LIGHTING (CAGE 72914)



LINK ASSY

NSN: 1560-00-894-6535
P/N: 204-030-987-1
BELL HELICOPTER (CAGE 97499)



LUBRICATING OIL TANK

NSN: 1560-00-070-7837
P/N: 205-060-538-069
BELL HELICOPTER (CAGE 97499)



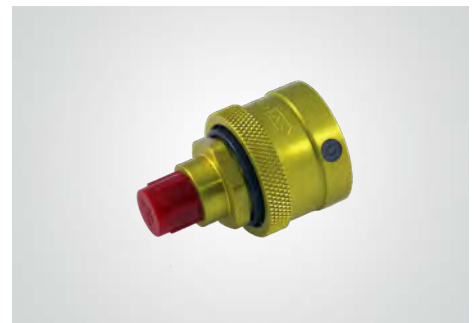
VENT VALVE

NSN: 4820-01-593-6733
P/N: 62533
CARTER (CAGE 62533)



RELIEF VALVE

NSN: 1650-00-943-6240
P/N: 54162-4
COLLINS(UTASHAMILTONSUNDSTRAND)(CAGE99167)



LUBE OIL COUPLING

NSN: 4730-00-079-9329
P/N: 375508-5
EATON (CAGE 00624)



CHIP DETECTOR

NSN: 2995-00-438-6344
P/N: B3703
EATON (CAGE 97484)



AVIONICS, SYSTEM UPGRADE, R&OH

NSN: VARIOUS
P/N: VARIOUS
VARIOUS OEMs (CAGE VARIOUS)



HONEYWELL LIGHTING

NSN: VARIOUS
P/N: VARIOUS
HONEYWELL (CAGE 99193)

PART DESCRIPTION	NSN	P/N	ALT. P/N	CAGE CODE	OEM	PLAT-FORM
FUEL CELL	1560-00-176-1250	FCE63977	205-062-635-101	05476	AMFUEL	205
FUEL CELL	1560-00-963-1091	FCE42005	205-060-605-005	05476	AMFUEL	212
FUEL CELL	2840-00-198-8610	FCE53775	206-062-505-1	05476	AMFUEL	412
TANK, LUBRICATING OIL	1560-00-070-7837	205-060-538-069		97499	BELL	UH1
LINK ASSY	1560-00-894-6535	204-030-987-1	204-03-987-5	97499	BELL	UH1
IGNITOR	2925-00-923-4397	CH34168	6877518	0AFL4	CHAMPION	206
IGNITER	2920-00-957-9947	FHE211-2	1-300-348-02	0AFL4	CHAMPION	UH1
VALVE RELIEF	1650-00-943-6240	54162-4		99167	COLLINS (UTAS /HAMIL-TON SUNDSTRAND)	UH1
LUBE OIL COUPLING	4730-00-079-9329	375508-5		00624	EATON	UH1
VALVE, VENT	4820-01-593-6733	62533		86090	EATON	UH1
CHIP DETECTOR	2995-00-438-6344	B3703		97484	EATON	UH1
FUEL CONTROL, MAIN, RR250	2915-01-466-0585	2524644-30	23065104	06848	HONEYWELL	206
POWER TURBINE GOVERNOR, RR250-C20B	2915-01-571-2741	2524769-14		06848	HONEYWELL	206
POWER TURBINE GOV, RR250-C30	N/A	2524769-14H		06848	HONEYWELL	206
AFCU, BELL PT6T-3	2835-01-146-5266	3244721-9	3244721-8	06848	HONEYWELL	212
YAW RATE GYROSCOPE	N/A	7007453-902		07187	HONEYWELL	212, 412
RECEIVER, RADIO	5895-01-326-6139	066-01055-0071	066-1055-71	22373	HONEYWELL	206
ADF RECEIVER	5826-01-411-8512	066-01077-0001		22373	HONEYWELL	212
KTR-908 VHF COMM. TRANS, 25KHZ, 20W	5821-01-314-8292	064-1023-00	064-01023-0000	22373	HONEYWELL	412
CONTROLLER, AUTOMATIC, FLIGHT PILOT	6615-01-287-1254	4025008-918	SP-711	55939	HONEYWELL	412
FZ-706 DIGITAL FLIGHT CONTROL COMP	N/A	7015480-902		55939	HONEYWELL	412
AUTOMATIC PILOT ENGAGING CNTLR	6615-01-280-9721	7000299-901	PC-702	55939	HONEYWELL	412, 230
TARSYN 3-AXIS REFERENCE GYRO ASSY	6615-01-439-7594	2593996-333		55939	HONEYWELL	412EP
INDICATOR	6880-01-125-0843	3571370-0001	204-070-155-1	55972	HONEYWELL	AB205
COMPRESSOR BLEED VALVE, PT6T	2840-01-497-2103	540-1407-4	3049038-03	59364	HONEYWELL	212, 412
COOLER,LUBRICATING OIL,ENGINE	2935-00-121-6554	L8534998	AV29350H58-001	63389	HONEYWELL	206
GENERATOR	N/A	28B139-21A		64547	HONEYWELL	AB212
GEAR BOX ASSEMBLY	5845-00-908-9266	3151290	3165829	77068	HONEYWELL	AB212
TRANSMITTER,PRESSURE	6620-00-401-4988	3567401-1501	209-062-608-1	96774	HONEYWELL	AB212
INDICATOR,RADAR TARGET	5841-01-544-8436	4001670-2513		97896	HONEYWELL	212
GEARSHAFT	3040-01-459-1398	1-030-193-05		99193	HONEYWELL	UH1
CHAMBER, COMBUSTION, T53 ENGINE	2840-00-943-2375	1-300-377-01		99193	HONEYWELL	UH1
LANDING LIGHT ASSY, RETRACTABLE	6220-00-165-5859	45-0128-1		72914	HONEYWELL LIGHTING	212
RETRACTABLE SEARCH/LANDING LIGHT	6220-00-460-0615	45-0122-1	212-075-200-1	72914	HONEYWELL LIGHTING	212
LANDING LIGHT	6620-00-283-9767	G6250-4		72914	HONEYWELL LIGHTING	212
LIGHT,NAVIGATIONAL	6220-01-501-9736	22150-303		72914	HONEYWELL LIGHTING	AB212
SENSOR, CONTROL, AIR	1660-00-425-6077	C35D48	212-070-444-1	72914	HONEYWELL LIGHTING	AB212
GEAR ASSY	6220-00-780-6452	B6921-1	B-6921-1	72914	HONEYWELL LIGHTING	AB412
ACTUATOR	6220-01-037-4088	46-0005-1		72914	HONEYWELL LIGHTING	UH1
SEARCHLIGHT-CONTROLLABLE DUAL MODE		45-0253-213		72914	HONEYWELL LIGHTING	
SEARCHLIGHT-CONTROLLABLE DUAL MODE		45-0253-219		72914	HONEYWELL LIGHTING	
SEARCHLIGHT-CONTROLLABLE DUAL MODE		45-0253-223		72914	HONEYWELL LIGHTING	
SEARCHLIGHT-CONTROLLABLE DUAL MODE		45-0253-227		72914	HONEYWELL LIGHTING	
SEARCHLIGHT-CONTROLLABLE DUAL MODE		45-0353-201		72914	HONEYWELL LIGHTING	
SEARCHLIGHT-CONTROLLABLE DUAL MODE		45-0353-203		72914	HONEYWELL LIGHTING	
FILTER ELEMENT	2945-01-319-0352	AC9985F30	7589830	18350	PALL	AH1
FILTER ELEMENT, FLUID	2915-01-143-9982	AC-9482F-21		18350	PALL	UH1H
FUEL BOOST PUMP	2915-01-124-5222	1C64-1	206-062-687-101	59211	PARKER	206
MAIN ROTOR LUBE PUMP	4320-00-150-0309	GC2778-1	212-040-184-1	86329	PARKER	212
HOSE ASSY, NONMETALLIC	4720-00-412-1833	156F003-4S0300	70-009F000Y300A	98441	PARKER	AB412
WINDOW CREW FWD R/H	1560-00-690-7286	204-030-459-002	204-459-002	12849	TEXSTARS	UH1
WINDOW, CREW, FWD L/H	1560-00-690-7285	204-030-459-1		12849	TEXSTARS	UH1

MILITARY AVIATION AFTERMARKET SOLUTIONS

Stocking Distributor | OEM Spares Support | R&OH Management | Upgrade Programs



Company	Cage Code	Location
Airtronics	58078, 93024	Tucson, AZ
Amfuel	0M307	Magnolia, AR
Bendix King	22373	Albuquerque, NM
Breeze Eastern	08484	Whippany, NJ
Crane Aerospace - Hydro Aire	81982	Burbank, CA
EATON	Eaton	8W928 Eastanolle, GA
	Eaton	00624, 8118 Jackson, MI
	Eaton	15284 Beltsville, MD
	Eaton	02750 Bethel, CT
	Eaton	97484, 16780 Glenolden, PA
	Eaton	09790, 17472, 72121 Grand Rapids, MI
	Eaton	86090 Irvine, CA
	Eaton	62983, 90166 Jackson, MS
	Eaton	99643, 76050, 52906 Los Angeles, CA
	Eaton	77842 Warwick, RI
Essex Cryogenics	19062	Saint Louis, MO
Essex Industries	0HFY6	Saint Louis, MO
HONEYWELL	Honeywell	017N4, 55972, 55973, 55974 Teterboro, NJ
	Honeywell	02LU7, 59364 Tempe, AZ
	Honeywell	0BFA5, 09128 Clearwater, FL
	Honeywell	0YFP0, 27914 Redmond, WA
	Honeywell	06848, 55284 South Bend, IN
	Honeywell	07187 Albuquerque, NM
	Honeywell	55939 Glendale, AZ
	Honeywell	22373 Olathe, KS
	Honeywell	64547, 83298 Tucson, AZ
	Honeywell	96774 Boyne City, MI
	Honeywell	99193, 9AA11 Phoenix, AZ
	Honeywell	9X173 Rocky Mount, NC
	Honeywell ASCA	07217 Mississauga, Ontario
	Honeywell Grimes	72914 Urbana, OH
	Honeywell GSE	91547 Stratford, CT
	Honeywell Intl	94580 Minneapolis, MN
	Honeywell/Allied Signal	70210, 72599 Torrance, CA
HUPP Aerospace/Defense	OJT27	New Haven, IN
InterConnect Wiring	0WW63	Fort Worth, TX
Marvin Test Solutions	056D8	Irvine, CA

Company	Cage Code	Location
McNally	0CZG6	Grantsburg, WI
Pall Aerospace	18350	New Port Richey, FL
PARKER	Parker, Aircraft Whl. & Brk. Division	33269 Avon, OH
	Parker, Control System Division	49695, 82106 Dublin, GA
	Parker, Cust. Supp. Military Div.	99931, 59211, 3H889 Irvine, CA
	Parker, Electronic Sys. Division	26055 Smithtown, NY
	Parker, Gas Turbine Fuel System	09523 Clyde, NY
	Parker, Gas Turbine Fuel System	1QTD9 Mt. Holley, SC
	Parker, Gas Turbine Fuel System	4U799 Glendale, AZ
	Parker, Hydraulic Systems Division	93835 Kalamazoo, MI
	Parker, Hydraulic Systems Division	26433 Elyria, OH
	Parker, Nichols Airborne Division	86329 Ayer, MA
PW Military Engines	55820, 45153	San Diego, CA
PW Military Engines	52661	East Hartford, CT
R4	5XBE4	Fort Walton Beach, FL
Robertson Fuel Systems	1T765	Tempe, AZ
Safran	31435, 3CPEQ	Twinsburg, OH
Saint Industries	8E8X2	Simi Valley, CA
SelectTech Geospatial	64CE9	Springfield, OH
Stauder Technologies	1C8S5	St. Peters, MO
Task Aerospace	6UUB4	Mesa, AZ
Texstars	12849	Grand Prairie, TX
TPG	3U457	Miami Lakes, Florida
TRANSDIGM	AeroControlex	81833, 04638 Cleveland, OH
	CEF Industries	00268, 63665 Addison, IL
	Champion Aerospace	0AFL4 Liberty, SC
	Electromech Technologies	54395, 82686 Wichita, KS
	Transicoil	65907, 25805 Collegeville, PA
	COLLINS	Collins (UTAS/Hamilton Sundstrand)
Collins (UTAS/Hamilton Sundstrand)		73030 Windsor Locks, CT
Collins (UTAS/Hamilton Sundstrand)		83843 Lima, OH
Collins (UTAS/Hamilton Sundstrand)		99167 Rockford, IL
Collins (UTAS/Hamilton Sundstrand)		0YJVA Miramar, FL
Collins (UTAS/Hamilton Sundstrand)		HOC11 Maastricht-Netherlands
Westest	65239	Farmington, UT